





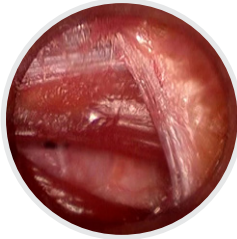
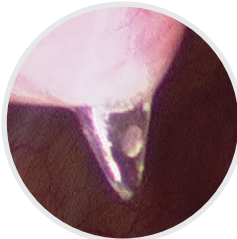
Kii[®]
Abdominal Access Systems

Kii Fios[®]

First Entry Access Systems

THE ONLY INSUFFLATING OPTICAL PORT



Kii Fios Access System	Insufflation Needle	5mm Access System	12mm Access System
3mm			
			
			

**Significantly Smaller
Fascial Defect**

True nonbladed access allows for reapproximation of tissue layers with significantly smaller fascial defect once the trocar is removed¹.

**Minimal Penetration
with Rapid Insufflation**

Only 3mm of trocar penetration is needed to initiate insufflation.

Kii

Balloon Blunt-Tip Access Systems

INNOVATIVE BLUNT-TIP TECHNOLOGY



Suture Ties

Enhance instrument reach and facilitate port-site closure.



Gel Cone

Enhances instrument articulation.

Non-Latex Balloon

Provides stable anchoring throughout lengthy procedures. Designed to maximize working space and visibility.

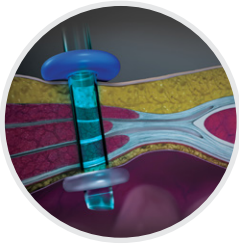
Optical Blunt-Tip Obturator

Facilitates direct visualization during trocar placement.

Kii

Advanced Fixation Technology

DESIGNED FOR RELIABLE RETENTION



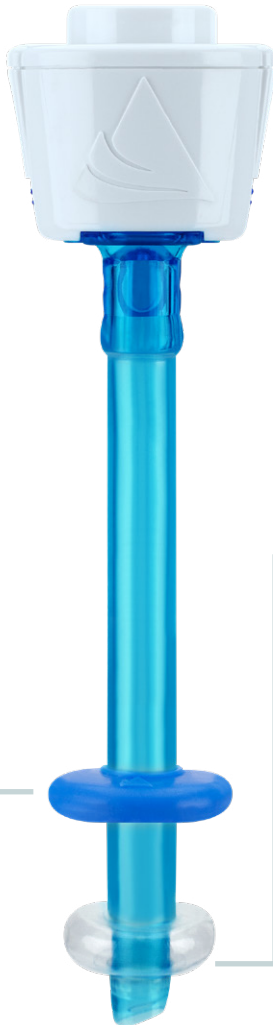
Retention Disk

Designed to reduce migration of the trocar sleeve into the abdominal cavity.



Non-Latex Balloon

Designed for reliable retention.
Designed to maximize working space and visibility.
Provides pressure on the incision site, potentially reducing port-site bleeding.
Maintains stability throughout procedures.



Kii

Low-Profile Access Systems

SLIM, LIGHTWEIGHT DESIGN



Low-Profile Seal Housing

Designed to optimize external working space, minimizing interference with adjacent ports.



Low-Profile Kii Seal



Standard 5mm Kii Seal

Z-Thread Sleeve with Extended Threads

Designed to maintain retention at shorter depths, enhancing internal working space and visibility.

Kii Low-Profile Access Systems

Reorder No.			Size
<i>Optical</i>	<i>Bladed</i>	<i>Sleeve</i>	
CTR21	CTB21	CTS28	5 x 55mm
CTR22	CTB22	CTS29	5 x 100mm
CTR23	CTB23	N/A	5 x 55mm, dual pack
CTR24	CTB24	N/A	5 x 100mm, dual pack

Kii

Shielded Bladed Access Systems

SMOOTH, CONTROLLED ENTRY



Intuitive Switch Design

Provides a clear indication of shield position.



Deactivated



Activated

Kii Shielded Bladed Access Systems

Reorder No.		Size
	<i>Advanced Fixation</i>	<i>Z-Thread</i>
N/A	CTB05	5 x 55mm
CFB03	CTB03	5 x 100mm
CFB01	CTB01	5 x 150mm
N/A	C0Q61	8 x 100mm
CFB33	CTB33	11 x 100mm
CFB73	CTB73	12 x 100mm
CFB71	CTB71	12 x 150mm
N/A	CTB14	5 x 55mm, dual pack
CFB12	CTB12	5 x 100, dual pack
N/A	CTB10	5 x 150mm, dual pack
N/A	CTB35	11 x 100mm, dual pack
N/A	CTB75	12 x 100mm, dual pack

Kii

Optical Access Systems

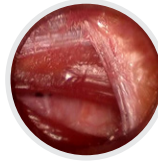
EXCELLENT OPTICAL CLARITY



Tissue Reapproximation



Initial
Withdrawal



Midway



Complete
Withdrawal

Kii Optical Access Systems

Reorder No.		Size
<i>Advanced Fixation</i>	<i>Z-Thread</i>	
N/A	CTR05	5 x 55mm
CFR03	CTR03	5 x 100mm
CFR01	CTR01	5 x 150mm
N/A	COQ19	8 x 100mm
CFR33	CTR33	11 x 100mm
N/A	CO83	12 x 60mm
CFR73	CTR73	12 x 100mm
CFR71	CTR71	12 x 150mm
N/A	CO37	15 x 100mm
CFR39	CO39	15 x 150mm
N/A	CTR14	5 x 55mm, dual pack
CFR12	CTR12	5 x 100mm, dual pack
CFR10	CTR10	5 x 150mm, dual pack



Kii Fios First Entry Access Systems

Reorder No.		Size
	<i>Advanced Fixation</i>	<i>Z-Thread</i>
CFF05	N/A	5 x 75mm
CFF03	CTF03	5 x 100mm
CFF01	CTF01	5 x 150mm
CFF33	CTF33	11 x 100mm
CFF75	N/A	12 x 75mm
CFF73	CTF73	12 x 100mm
CFF71	CTF71	12 x 150mm
CFF14	N/A	5 x 75mm, dual pack
CFF12	CTF12	5 x 100mm, dual pack
CFF10	N/A	5 x 150mm, dual pack
N/A	CTF35	11 x 100mm, dual pack
N/A	CTF75	12 x 100mm, dual pack



Kii Balloon Blunt-Tip Access Systems

Reorder No.		Size
	<i>Blunt-Tip</i>	
COQ20		5 x 100mm
COR47		12 x 100mm
COR50		12 x 130mm



Kii Sleeves

Reorder No.		Size
	<i>Advanced Fixation</i>	<i>Z-Thread</i>
N/A	CTS03	5 x 55mm
CFS03	N/A	5 x 75mm
CFS02	CTS02	5 x 100mm
CFS01	CTS01	5 x 150mm
CFS12	CTS12	11 x 100mm
CFS22	CTS22	12 x 100mm
CFS21	CTS21	12 x 150mm

1. Shafer DM, Khajanchee Y, Wong J, Swanström LL. Comparison five different abdominal access trocar systems: analysis of insertion force, removal force, and defect size. Surg Innov. 2006;13(3):183-189.

Visit [appliedmedical.com/kii](https://www.appliedmedical.com/kii) for more information.

The Kii access systems are trocars used to gain laparoscopic access for endoscopic instrumentation.

Please contact your Applied Medical representative for more information on availability. This information is intended for dissemination exclusively to healthcare professionals and is not intended to replace labeling and Instructions for Use (IFU). Please refer to the IFU for the indications, contraindications, warnings, precautions, instructions and other information.

© 2022 Applied Medical Resources Corporation, Rancho Santa Margarita, CA. All rights reserved. Applied Medical, the Applied Medical logo design, and marks designated with the symbol ® are trademarks of Applied Medical Resources Corporation, registered in one or more of the following countries: Australia, Canada, Japan, South Korea, the United States, the United Kingdom, and/or the European Union.